



SCADA,
Man Machine Interface,
and your Applications for
Zero-cost

- *Your teams are productive in one week.*
- *Your applications powered by Visual I/O compiler.*
- *Plethora of software components simplifies your development.*
- *Popular PLC Protocols in the market are included and free.*
- *Developments of optimized applications with professional quality, from your first versions.*
- *With Visual I/O become a super developer.*
- *Only One time purchase to reduced overall cost.*
- *Build Professional applications.*
- *A free technical support*



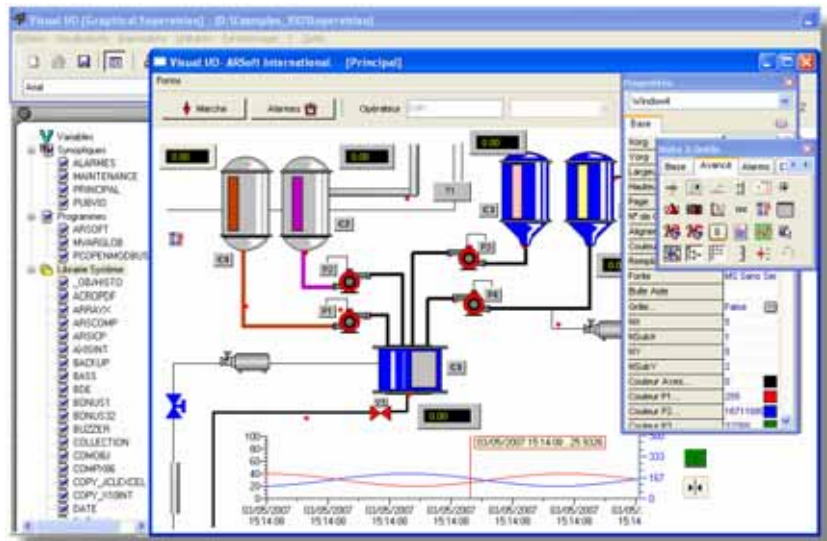
**With Visual IO
All is included and Free.**

ARSOFT
Visual IO **RUNTIME FREE**

RUNTIME FREE - No Royalties

Visual I/O is available in **runtime free** Version. You buy the product once and all the applications generated will be entirely royalty free. Visual I/O has the characteristics of a high-level SCADA and a complete development tool including a true compiled language and a step by step debugger.

Create a single executable file (.EXE <1 Megabytes) with its icon, menus etc.. Visual IO simplifies the deployment and the maintenance of your applications.



Often, under Windows, the interfaces created are sad, commonplace and correspond to another time. With Visual I/O, create easily great custom applications!

An immediate starting up with the included experts and components.

More than **200 specialized components** are provided with their source code. With Visual IO the following protocols are included: Schneider, Omron, Siemens, ICP, Advantech etc., and these are totally free. Classic Supervision as Alarms, Historicals, Events, Recipes, Reports to system programming (in Pascal et Assembler language), Visual I/O comes with a real development tool for industrial automation applications. The created applications (executables) are connected by Ethernet, allowing peer to peer applications.

A Powerful language, Simple and Intuitive

Delivered with hundreds of functions and procedures of the simplest in the most evolved manner, Visual I/O delivers you all its source code.

The high-level language will allow you to manipulate any sorts of types: Boolean, Integer, Word, Byte, Real, Double, Single, Strings, Variants, array of type, Structures and pointers..

Visual IO Creates a single executable file.

Yes. You can distribute them freely, without paying any royalties. All is included in one only file generally less than 1 Mbytes because Visual I/O is a real compiler. You can also include files, images that will be extracted at launch time of your application on the final PC.



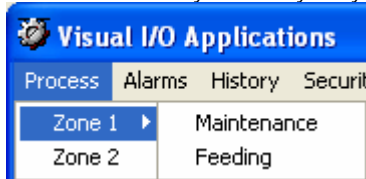
With Visual IO
Only one file (.EXE) < 1 Mbytes
including all your application.

All Windows objects.

- Edit box.
- Tabs.
- List box.
- Combo box.
- Image.
- Scrollers.
- Graphic button.
- Simple and toggle buttons.
- Check box.
- Selector.
- Array
- Graphical List.
- Report.
- Icons List.
- Tree-View.
- ActiveX
- click areas.
- Slider.
- Splitter.
- Status Bar.
- WebCam
- And more....

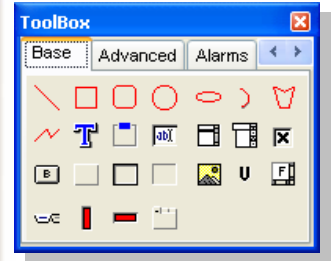
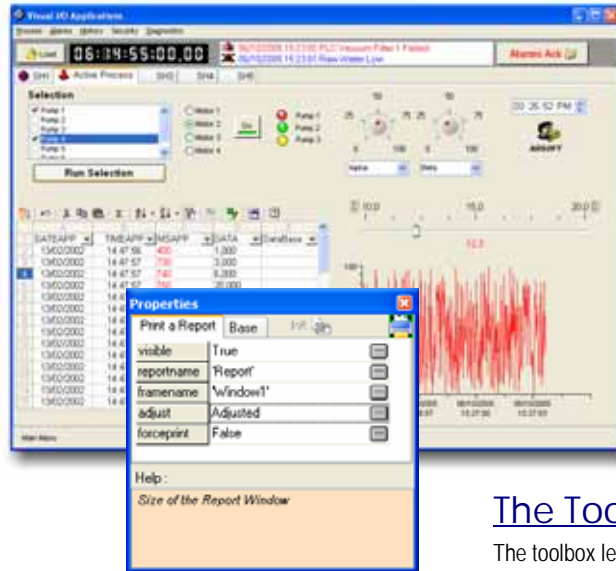
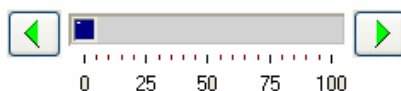
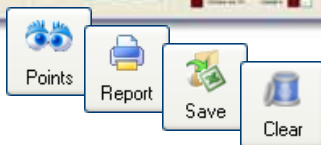
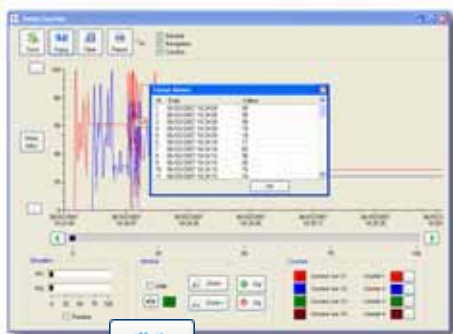
Menu Generator

The menu editor is extremely simple to use: just type the option labels directly where you want them. The menu is created directly in front of your eyes.



ActiveX Incorporation

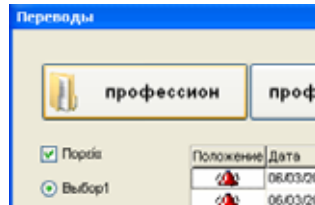
Use all components on the market. The ActiveX technology is totally implemented.



200 components are delivered with their source codes source.

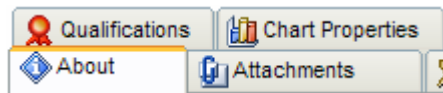
Multi Lingual

Visual I/O enables to build multilingual runtimes through Unicode, authorizing to display also Arab, Cyrillic Characters.

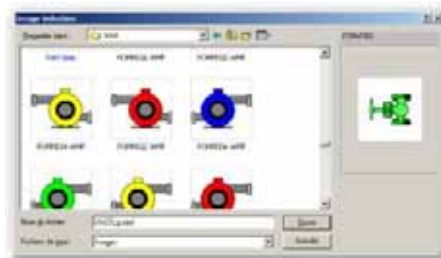


Tabs Made Easy

Visual I/O lets you easily create windows with tabs



Few hundreds of reusable symbols.



30 components for trends and historical management

These components are delivered with their source code.

The Toolbox

The toolbox lets you placing components on the current form. Visual I/O has all the development tools with a properties box for setting the graphical attributes of the component (font, color, alignments etc.). Visual I/O is provided with **more than 200 components** with their source code. A component is a reusable program. Of course **you can also create your own component**.

The properties box

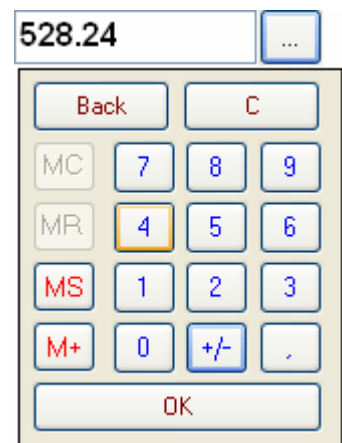
Allows to set all the components attributes of your forms.

Create a Component, then reuse it endlessly

A component can be used simultaneously by several applications. An application can use several different components. The components that you create are secure, meaning that nobody can see or copy their source code, their analysis, etc..

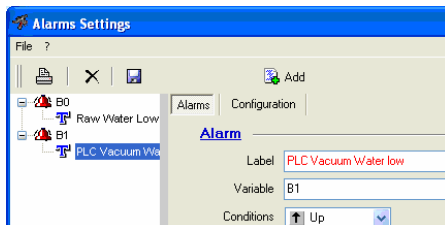
Applications on touch screen

Several components allow the complete management of an application with a touch screen.



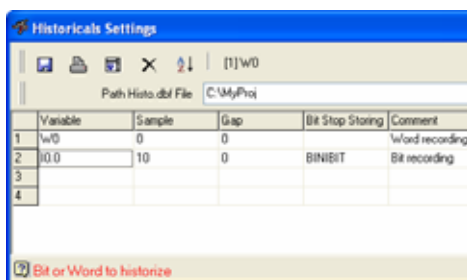
Alarms

Handle any bit or Numerical value as an alarm. An alarm maybe associated to an image and to a text, to be allocated to a group and a zone to facilitate its sorting. It can also activate a sending of email. A set of components is available to manage the data base of alarms (sorting, searching for by date or by name, purge, export to Excel). The purge can be also automatic. The storage of alarms is made in a DBase file compatible directly with Excel.



Historicals

Allows you to recording in back task, numerical values or binary states. Delivered with specialized components, allows them to show in the form of curves or grid of data. The database of history is exportable directly into Excel or in other database system.



Recipes

Recipes define the list of the variables which are beings affected during the process. Recipes contain ingredients, which will be stored in disk and to be restored at any time. Visual I/O contains a tab for creating a form generating a recipe. These ready-to-use components allow the saving and the downloading of pre-established recipes.



Events

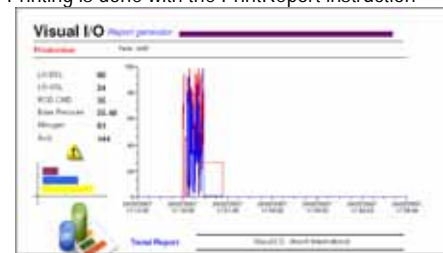
The events are comparable to alarms. However, an event can generate a simple or complex action. Visualisation of Event as the alarms in a special component and it is simple to achive. Thanks to the events, all the changes of states can be shown in your application. The purge is indeed automatic and customizable



Reports

The generator of report of Visual I/O lets you create printable pages. To integrate, for example a value into a report, its very easy - place the object value, adjust its graphic attributes font, size etc. then affect the variable. Besides the classic graphs (texts, images, lines) reports allow to integrate curves. Print preview is possible.

Printing is done with the PrintReport instruction



Excel Compatible

Thanks to Excel components, allow easy import and export of your data. Alarms, history and events are already compatible with Excel.



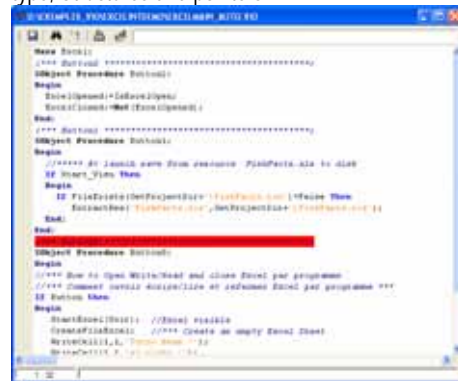
Communication with PLC

Delivered with standard protocols: PROFIBUS DP (card needs), Modbus, Omron SysmacWay, Siemens MPI, Schneider Unitelway, ICP, Advantech on the serial comport completely free. Visual I/O is a server as well as an OPC client, enabling you to connect to all the communication servers in the market.



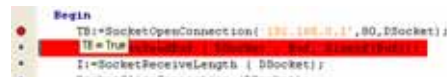
A Powerful language, simple and intuitive

Delivered with hundreds of functions and procedures of the simplest in the most evolved manner, Visual I/O delivers you all its source code. The high-level language will allow you to manipulate any sorts of types: Boolean, Integer, Word, Byte, Real, Double, Single, Strings, Variants, array of type, Structures and pointers.



An Interactive DEBUGGER

The Visual I/O debugger uses debugging with break points and single-stepping your program.



With Visual I/O Connect to all the market databases

- ❖ The BDE library allows the connection to the Client/Server databases.
- ❖ The MYSQL library lets us open, read and write record by record in MySQL tables.
- ❖ The SQL language is also available.
- ❖ You program in Pascal language.
- ❖ Visual I/O enables to use extended, singles, doubles, integers, words and bytes as numerical variables.
- ❖ Visual I/O is a real compiler that creates a final single Executable file with all necessary resources in less 1 megabyte.

Frequently asked questions about Visual I/O

Is it necessary to pay for each generated application?	No, you buy the product only once and all the applications generated will be entirely free.
Who can use Visual I/O?	it is for all the developers who want to create Windows © Industrial applications
What type of applications can I develop?	All. HMI enabling users to visualize and control industrial processes. Database, SCADA. Finally, no limit.
What do I need to know?	You need to know basic programming understanding. But It is not mandatory, as Visual IO is very simple to use.
How much time will it take me to come up to speed on Visual I/O ?	2 to 3 days. The handbook guides you step by step in the creation of your application. Many reusable examples are provided.
Do all the modules come standard with the product?	Yes, everything is included, from conception to maintenance. Visual I/O has no variables (tags) limitations..
Does Visual I/O create <<EXE>>	Yes. You can distribute them freely, without paying any royalties. All is included in only one file generally less than 1 Mbytes because Visual I/O is a real compiler..
Is it necessary to create a installation disc?	No, Visual I/O is not a product requiring many file. Your application can be saved only on a floppy disk..
Can I build Client/Server applications using Visual I/O	Yes, of course, using any of the industry databases
Can I freely distribute the integrated database?	Yes, Visual I/O has a native access to MySQL an open source database. Visual I/O can also interface the BDE from Borland ©
How powerful is the Visual I/O language?	The language used is the Pascal language, which is simple and very powerful at the same time. You will use procedures and high-level functions. You can also program directly in assembler. With the product, all the sources of libraries are supplied.
I already have an application., Will I be able to use it with Visual IO?	Yes, most certainly, Visual I/O supports all the industry standards and the Windows API
What about writing code?	Writing code is good, but do not write, it is often better. Visual I/O includes all necessary components delivered with their source code
How can I communicate with PLC?	Visual I/O includes configuration setup to communicate through different protocol with the reputed PLCs in the market (Siemens, Schneider, Omron ...) on the serial com port and that's free. You can also use the OPC Server to communicate with other PLCs.
My applications will work in network?	Yes, the same application can be launched on several PC connected in network. These applications will share the same global variables. When an application modify a value, the others applications will be automatically updated.



All market components



Display technical documentations



The world's most popular open source database



All data are directly **Excel** © compatible



Compatible Access.

ARSOFT International

www.arsoft.eu

sales@arsoft-int.com