



Communication MPI - ETHERNET

- MPI TCP/IP Adapter – Hilscher Netlink

Specifications :

- Installation *Plug and play*.
- Unplug on power on.
- No power supply.
- Need : Ethernet port of your PC.
- Windows 2000, XP, XPE.

Included

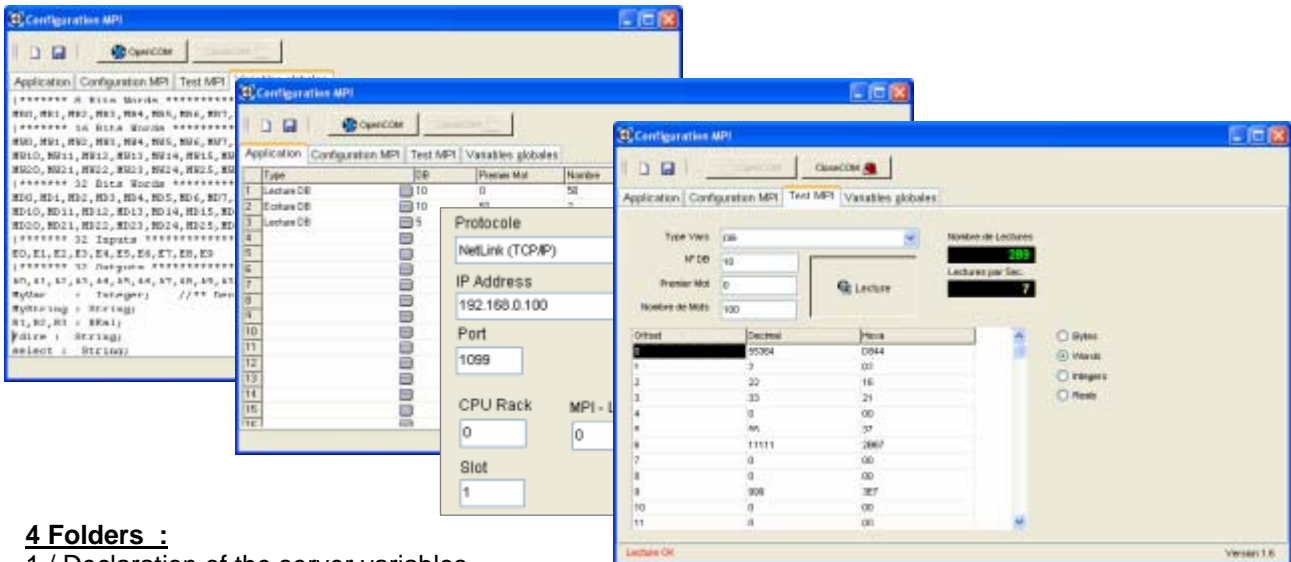
- MPI Configurator for the **Netlink** adapter.
- **OPC Server for interfacing with popular SCADA.**
- **DDE Server for interfacing with EXCEL.**
- Utilities and debugger.
- Examples in Visual Basic, Visual C++ and Delphi.
- DLLs, ObjectCOM, DCU for Delphi.

Hardware

- MPI Adapter TCP/IP MPI.
- Direct connection to Siemens © PLC and compatibles.

Software

- Communication with S7-200, S7-300, S7-400.
- Read and Write : DB, DI, Counter, Tempo.
- 100 % Compatible with Visual IO.



4 Folders :

- 1 / Declaration of the server variables.
- 2 / Setting of read and write operations.
- 3 / Setting of the IP address.
- 4 / Test of the communication in real time.

Finally, the MPI server runs in the windows' task bar.



ARSoft International
 1 Impasse René Lebrun – ZA de Monthéard 72000 LE MANS
 Tel : 0033 (0)2 43 72 45 45 Fax : 0033 (0)2 43 72 73 40
 Web : <http://www.arsoft.eu>
 Sales@arsoft-int.com